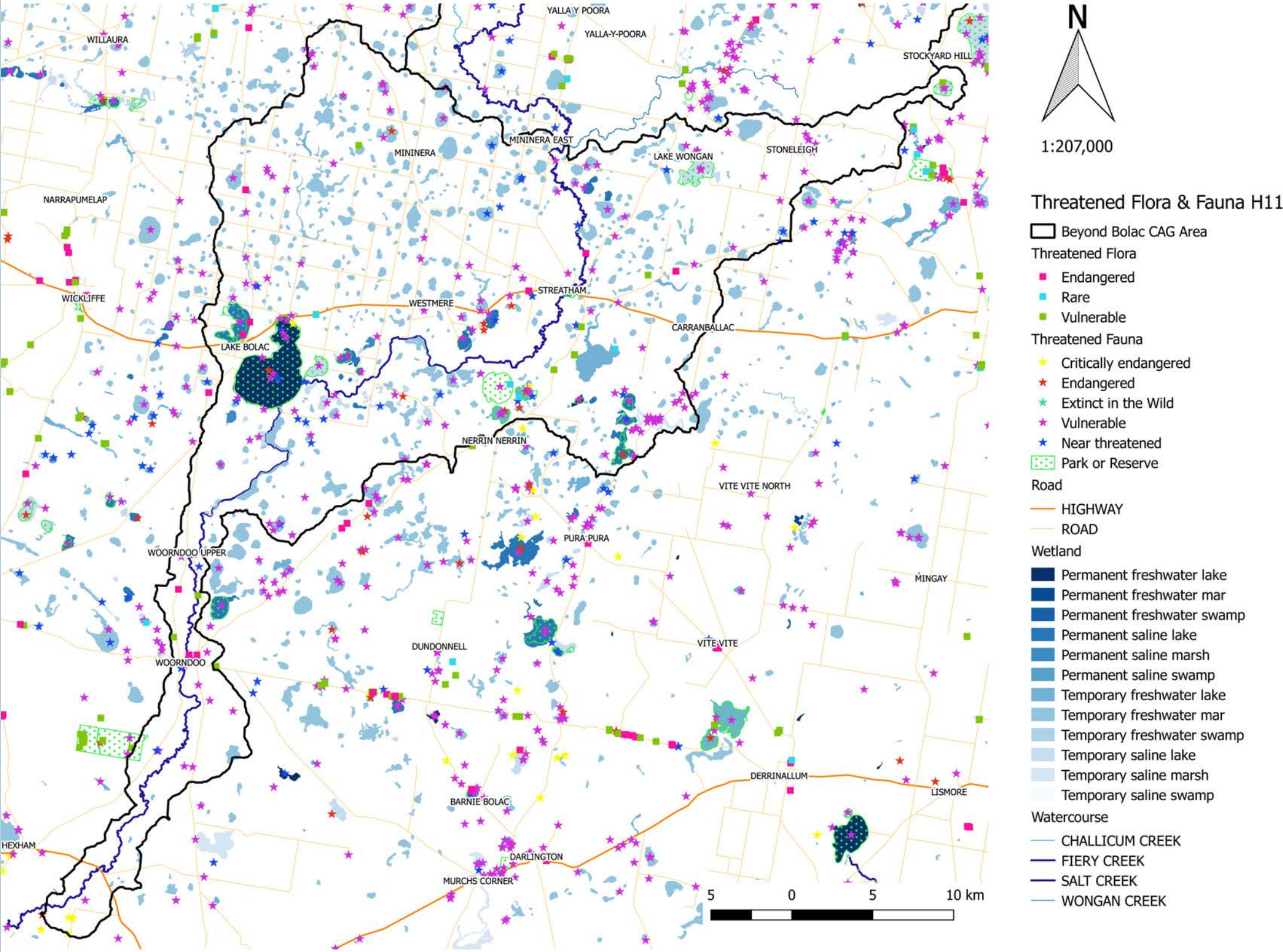


This map contains a snapshot in time of flora and fauna taxa records from the Victorian Biodiversity Atlas (VBA). The VBA for flora incorporates data from the Flora Information System and Victorian Rare or Threatened Population database. These include records from Victorian Government Departmental surveys, botanists, herbarium, field naturalists, consultants, universities, and the general public. The VBA for fauna incorporates the Atlas of Victorian Wildlife, Aquatic Fauna Database, Subtidal Reef Monitoring Program and Intertidal Reef Monitoring Program data and include records from Victorian Government Departmental surveys, Museum of Victoria specimens, Birds Australia atlas, environmental consultants and field naturalists groups.

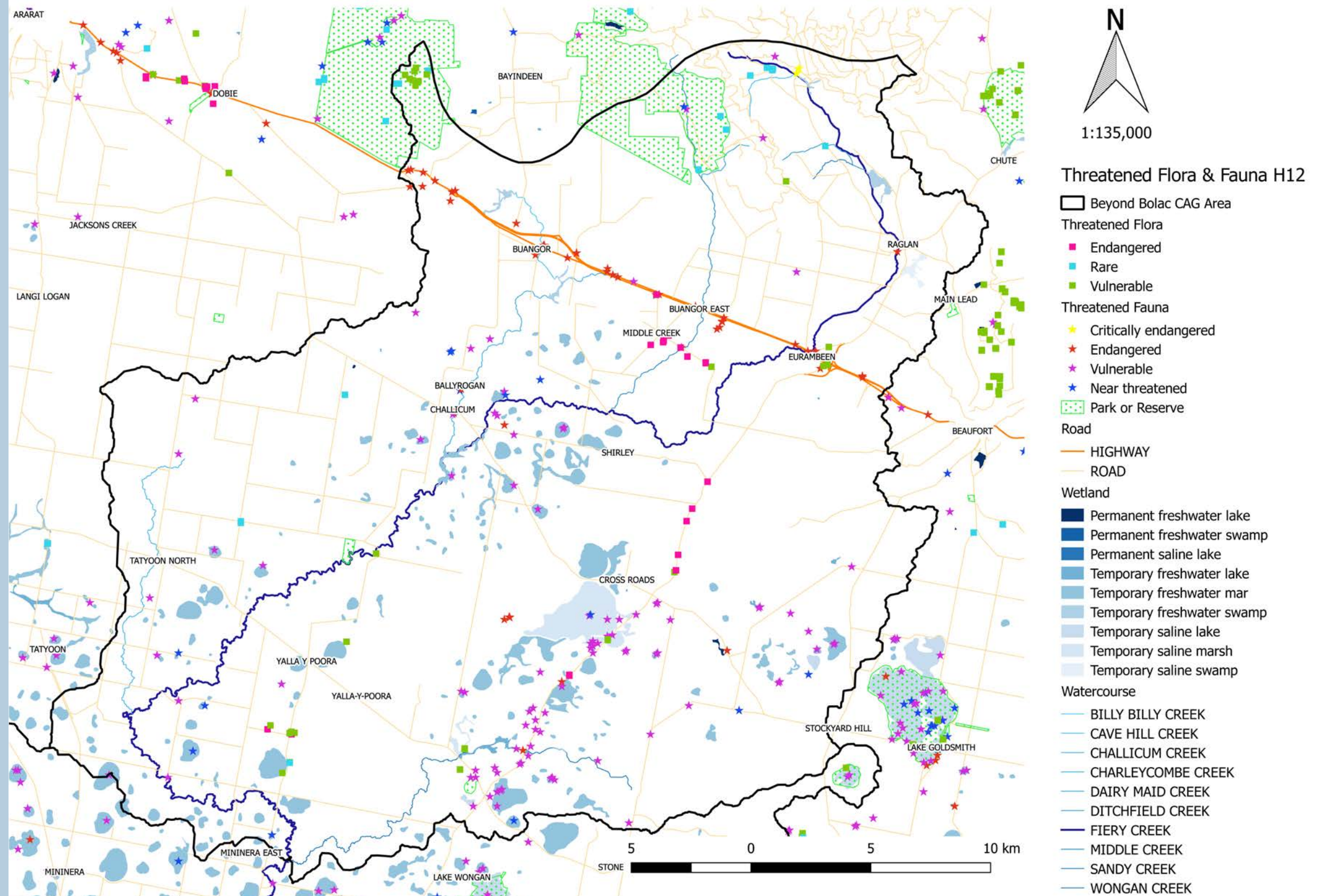
This map shows the number of threatened flora and fauna records across the catchment, and also what their status is. There are only a few fauna species present with H11 that are listed as critically endangered, the majority of fauna species within the sub-catchment have been listed as vulnerable. While the flora records show many species are listed as endangered or vulnerable, with a few rare species being present throughout.





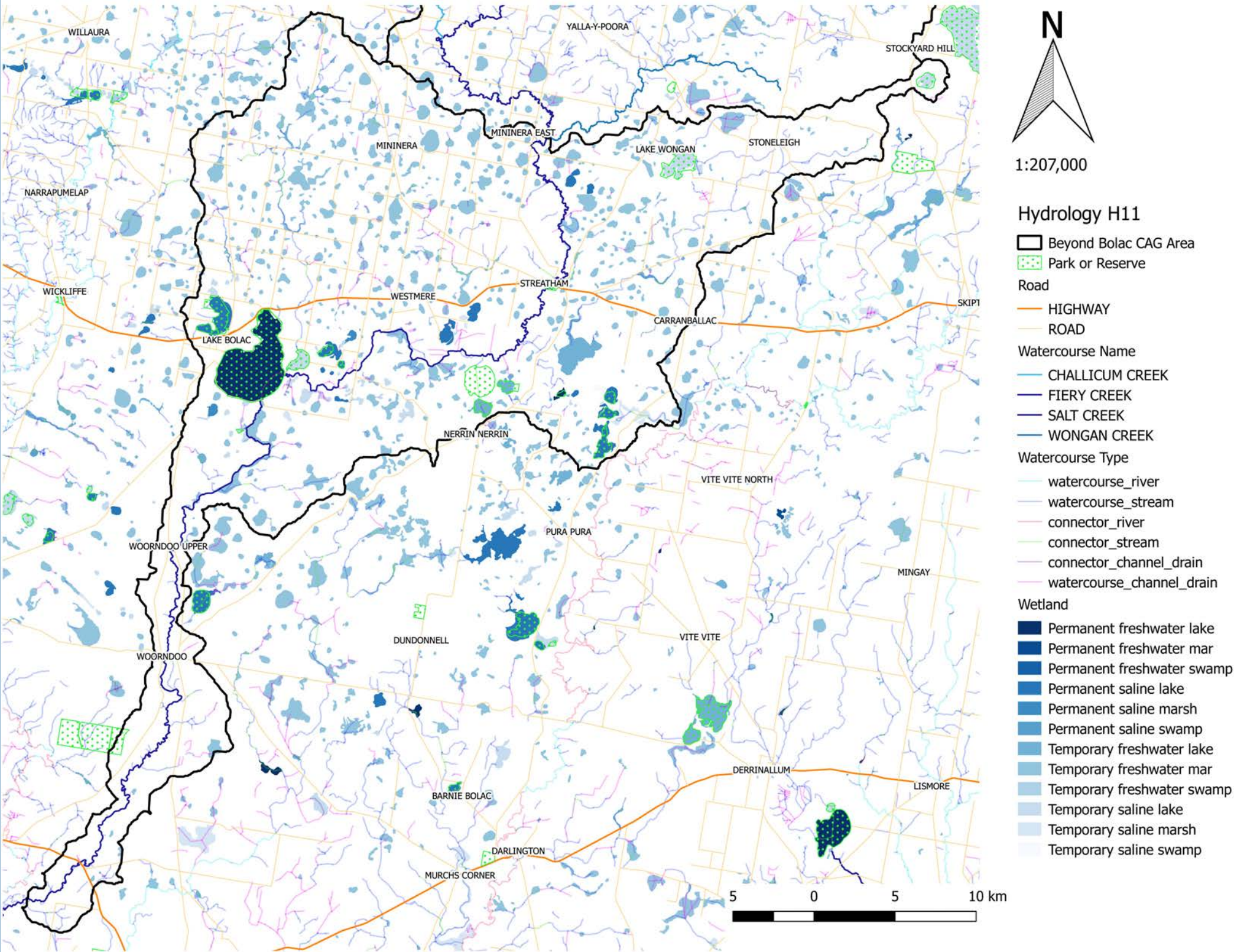
This map contains a snapshot in time of flora and fauna taxa records from the Victorian Biodiversity Atlas (VBA). The VBA for flora incorporates data from the Flora Information System and Victorian Rare or Threatened Population database. These include records from Victorian Government Departmental surveys, botanists, herbarium, field naturalists, consultants, universities, and the general public. The VBA for fauna incorporates the Atlas of Victorian Wildlife, Aquatic Fauna Database, Subtidal Reef Monitoring Program and Intertidal Reef Monitoring Program data and include records from Victorian Government Departmental surveys, Museum of Victoria specimens, Birds Australia atlas, environmental consultants and field naturalists groups.

This map shows the number of threatened flora and fauna records across the catchment, and also what their status is. There are only a few fauna species present with H11 that are listed as critically endangered, the majority of fauna species within the sub-catchment have been listed as vulnerable. While the flora records show many species are listed as endangered or vulnerable, with a few rare species being present throughout.



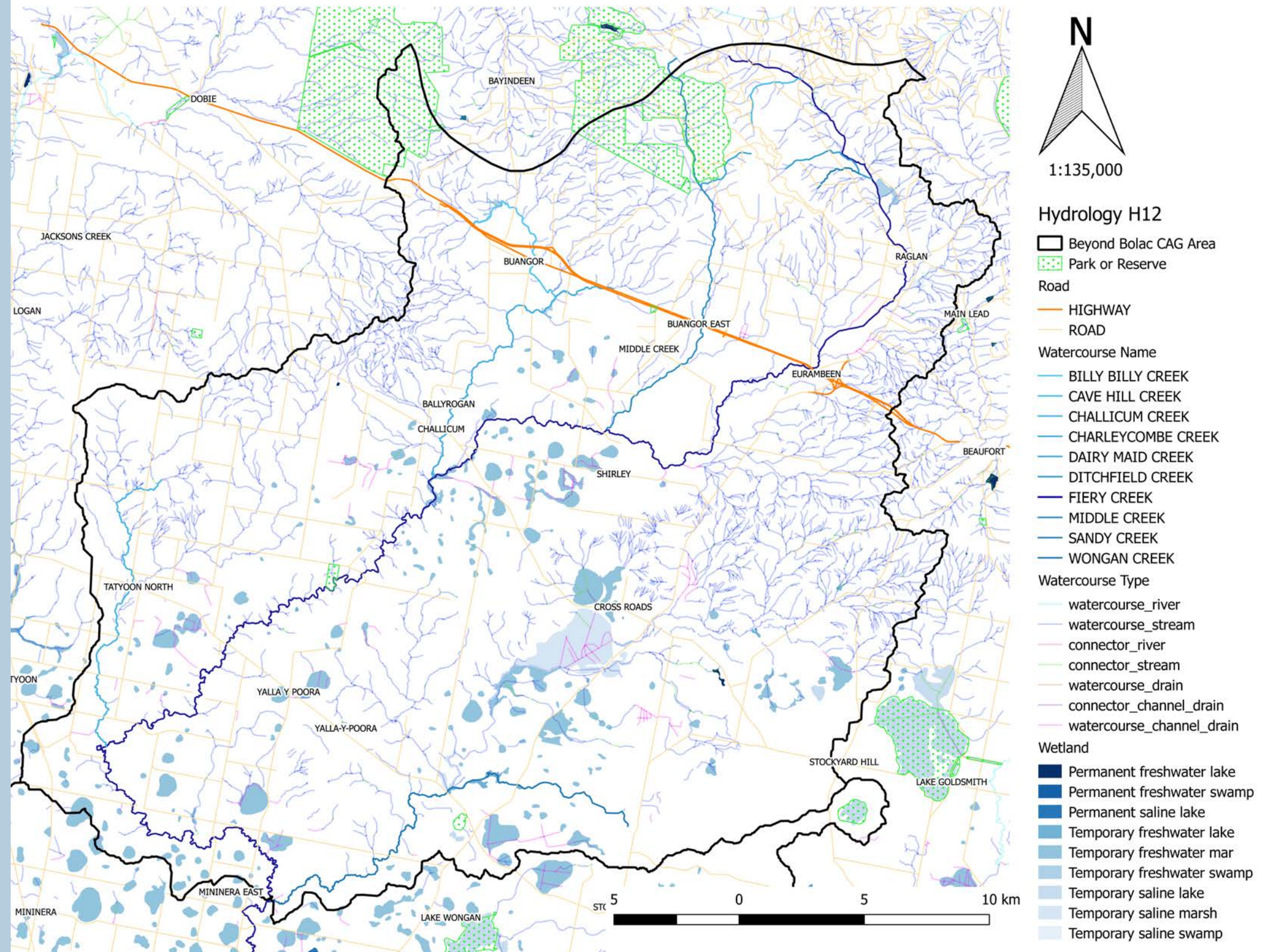


This map shows the natural and man-made hydrographic features across catchment, as well as the wetland types. The hydrological features have been categorised into Watercourses, such as channels, rivers and streams and connectors, such as drains. The wetlands layer shows the extent and type pf wetlands present. The wetlands are classified into primary categories based on wetland system type, salinity regime, water regime, water source, dominant vegetation and wetland origin. The H11 sub-catchment has a large number of wetlands present, many of which are ephemeral.



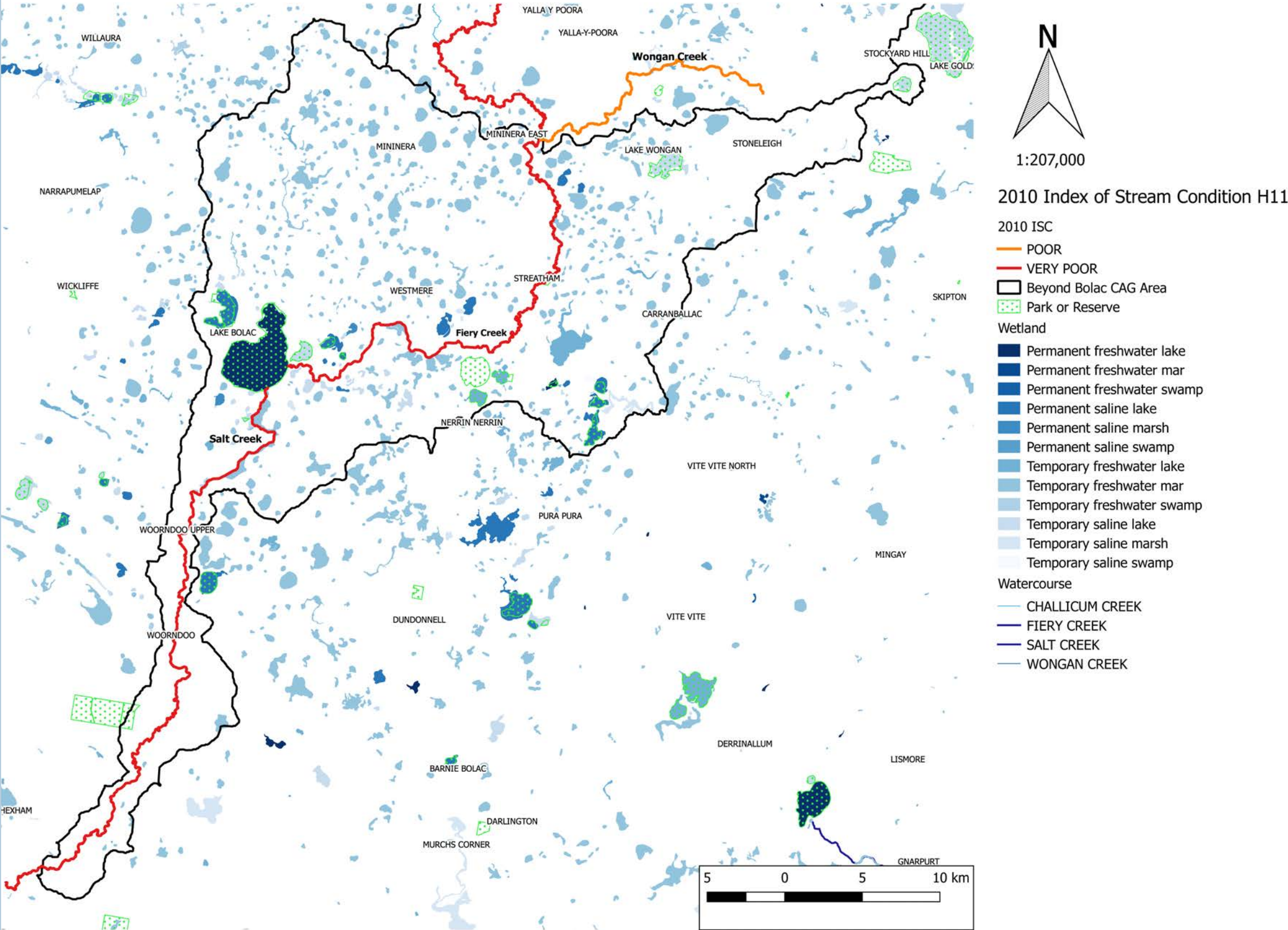


This map shows the natural and man-made hydrographic features across catchment, as well as the wetland types. The hydrological features have been categorised into Watercourses, such as channels, rivers and streams and connectors, such as drains. The wetlands layer shows the extent and type of wetlands present. The wetlands are classified into primary categories based on wetland system type, salinity regime, water regime, water source, dominant vegetation and wetland origin. The H11 sub-catchment has a large number of wetlands present, many of which are ephemeral.



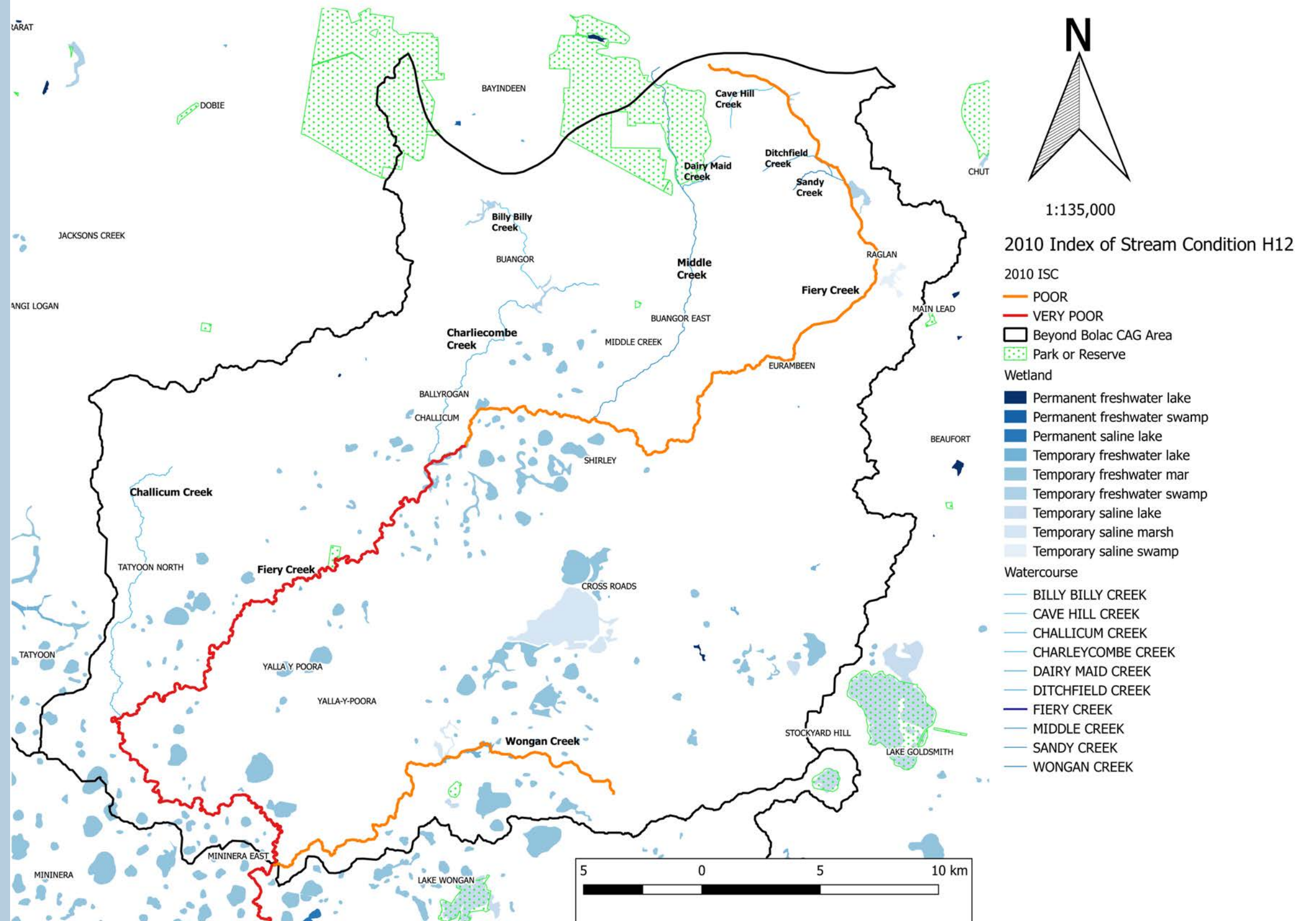


This map is a depiction of the 2010 Index of Stream Condition assessment which was undertaken across Victoria by the Department of Environment and Primary Industries. The map shows which rivers within the sub-catchment were included in the assessment, and what environmental condition they were assessed to be in. Based on this assessment, the Salt Creek and Fiery Creek have been assessed as Very Poor within the H11 sub-catchment, while in the H12 sub-catchment, Wongan Creek and the upper reaches of the Fiery Creek fared better being assessed as Poor.



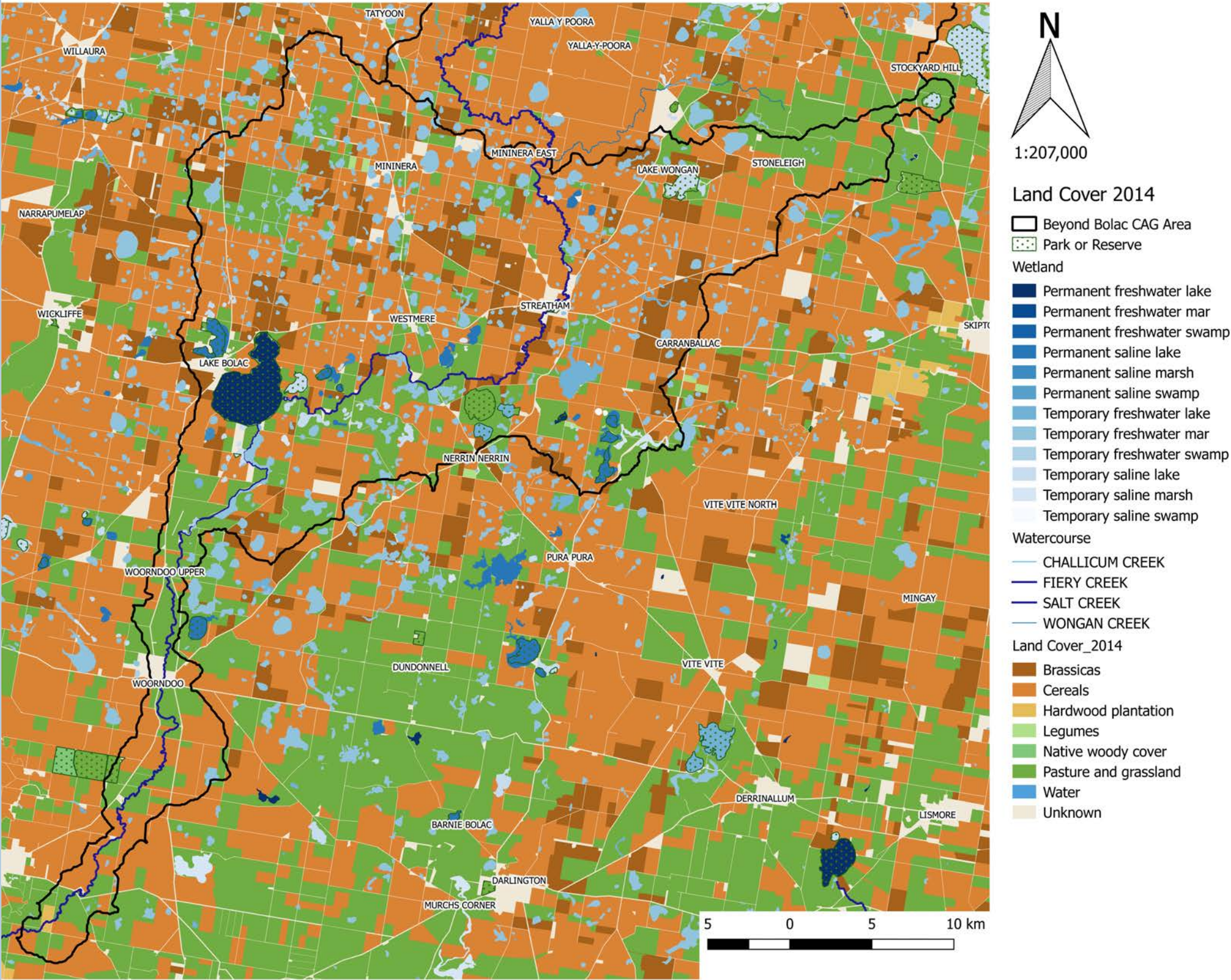


This map is a depiction of the 2010 Index of Stream Condition assessment which was undertaken across Victoria by the Department of Environment and Primary Industries. The map shows which rivers within the sub-catchment were included in the assessment, and what environmental condition they were assessed to be in. Based on this assessment, the Salt Creek and Fiery Creek have been assessed as Very Poor within the H11 sub-catchment, while in the H12 sub-catchment, Wongan Creek and the upper reaches of the Fiery Creek fared better being assessed as Poor.



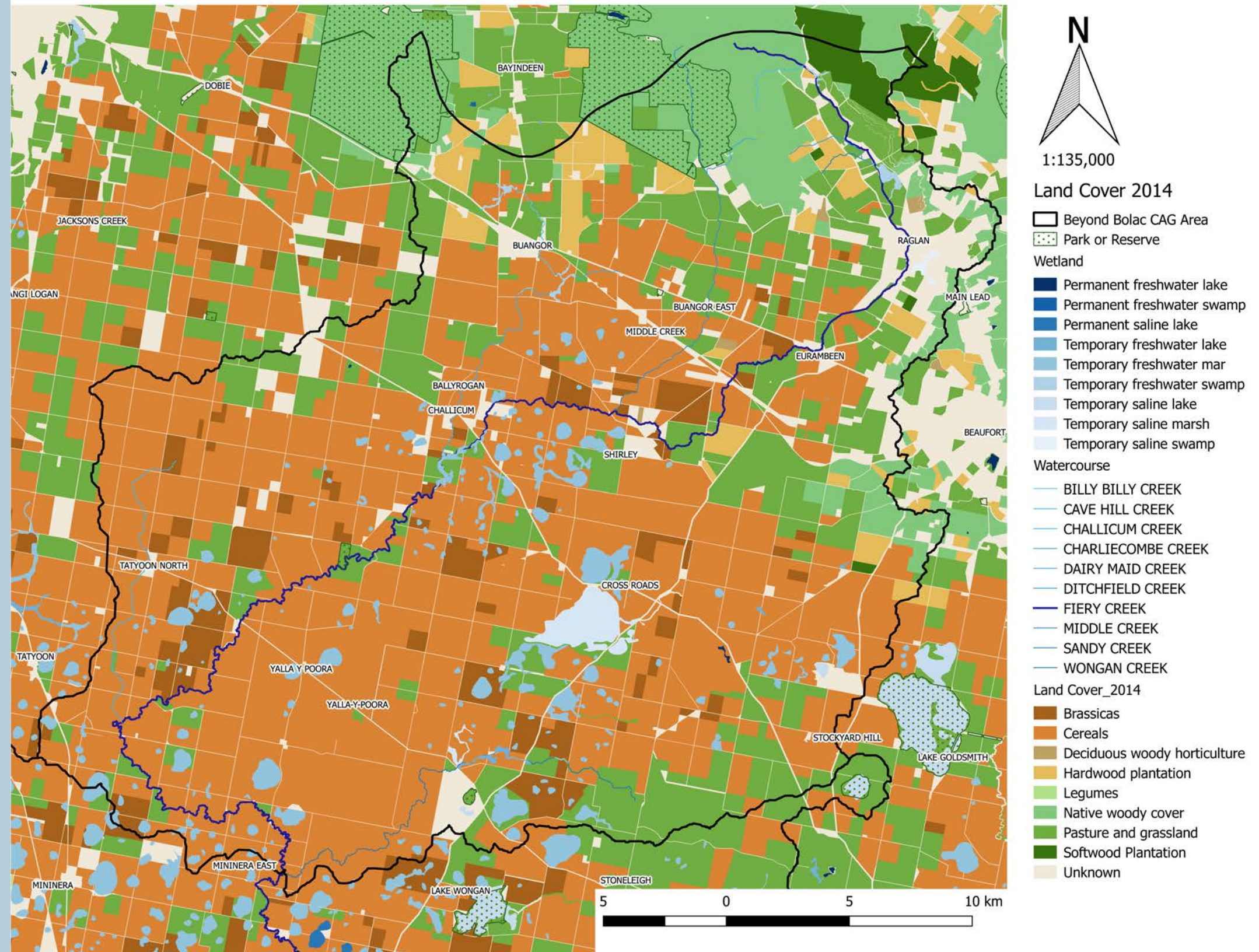


This map shows the various land cover classifications in 2014 derived from time series analysis of satellite imagery from NASA. Ground data is also collected annually across Victoria using a random sampling approach for validation of the classifications. This maps shows that brassicas, cereals and pasture and grassland are the dominate land cover classifications across the H11 sub-catchment, with cereals being more dominate in the H12 sub-catchment.



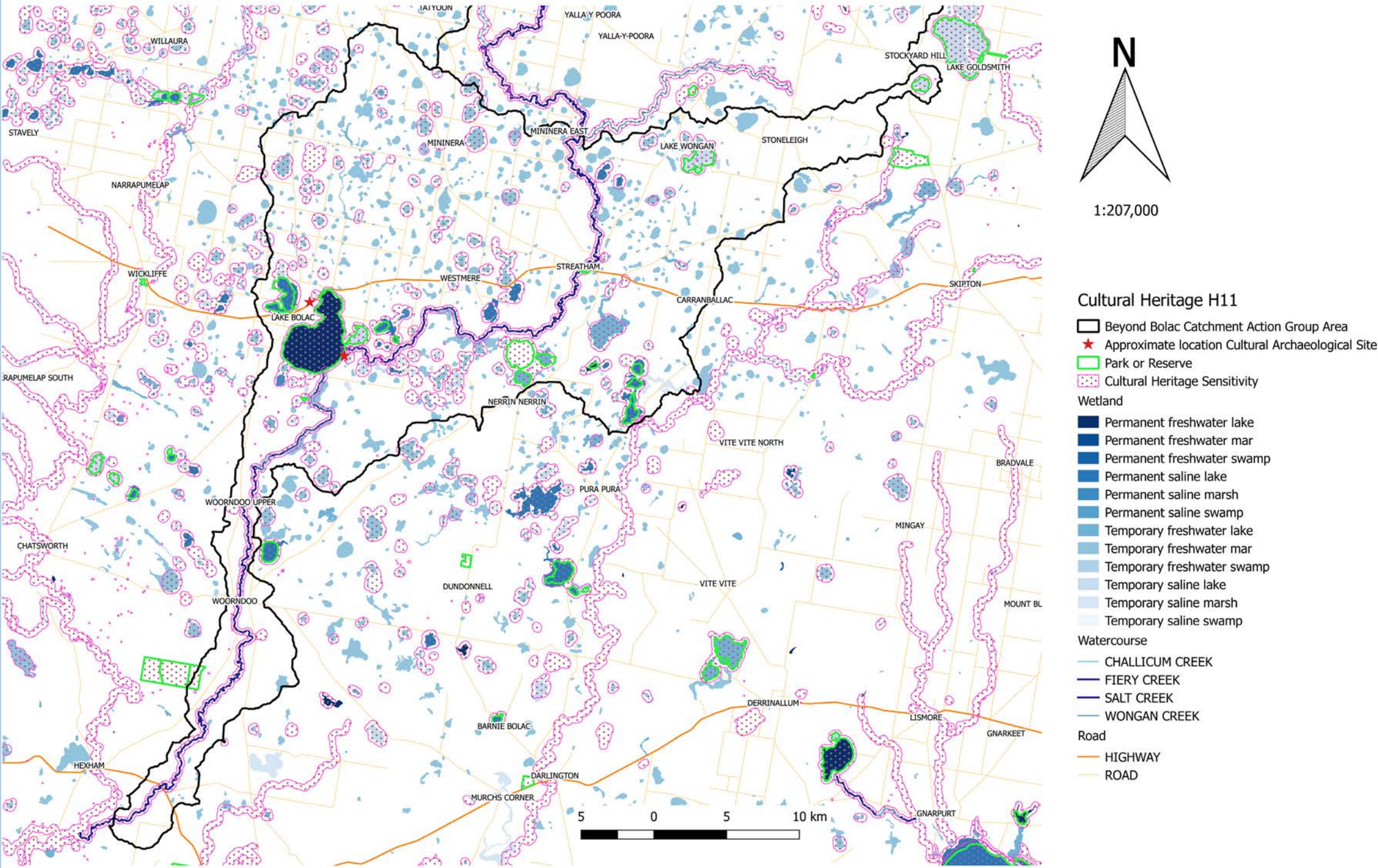


This map shows the various land cover classifications in 2014 derived from time series analysis of satellite imagery from NASA. Ground data is also collected annually across Victoria using a random sampling approach for validation of the classifications. This map shows that brassicas, cereals and pasture and grassland are the dominate land cover classifications across the H11 sub-catchment, with cereals being more dominate in the H12 sub-catchment.



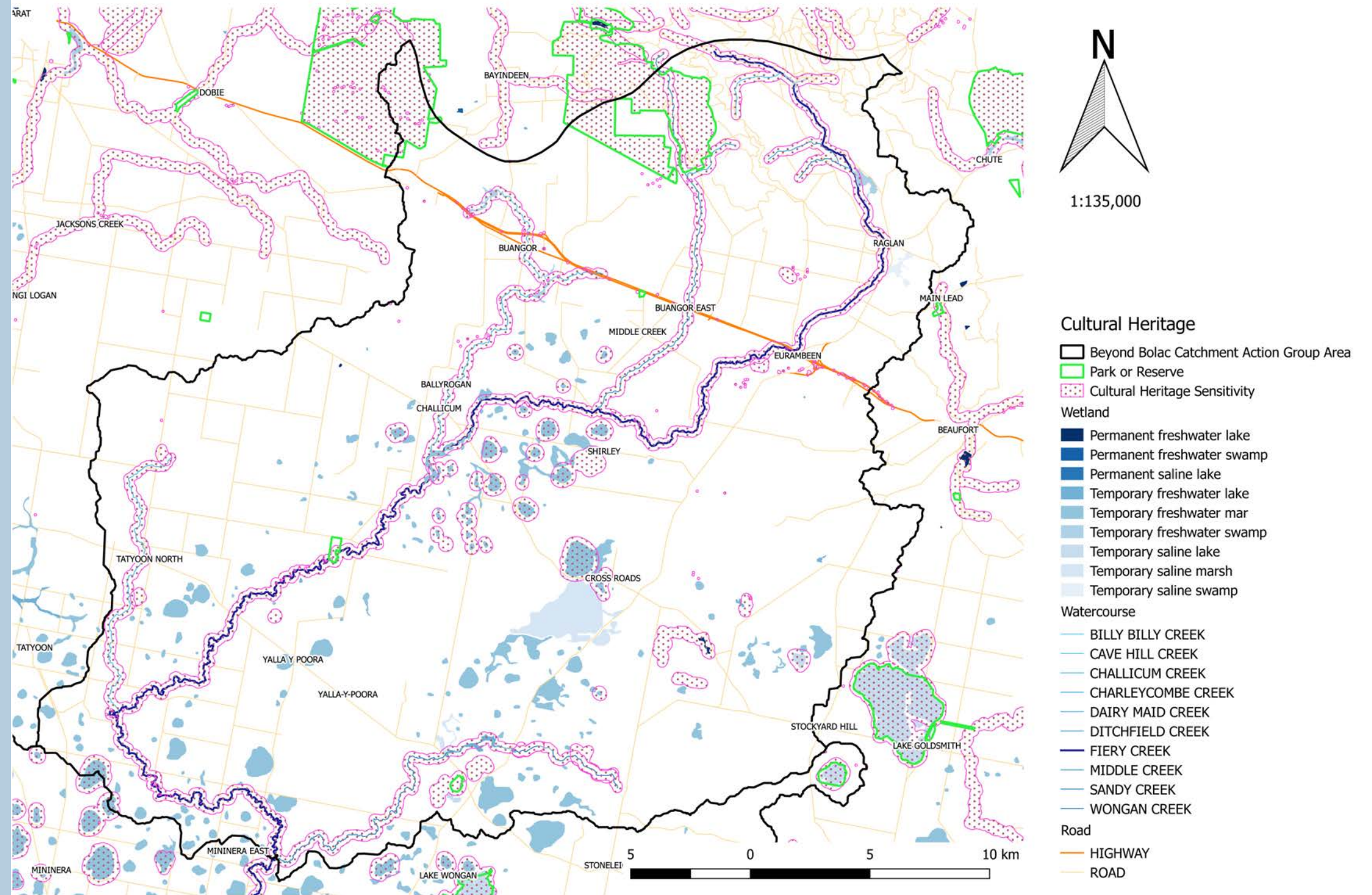


This map shows areas of cultural heritage sensitivity. These areas are either known to contain, or are likely to contain Aboriginal cultural heritage places and objects and are defined in the Aboriginal Heritage Regulations 2007. Cultural Heritage Sensitivity mainly occurs along waterways and around wetlands, as these areas are where it is most likely to find evidence of aboriginal existence. This map also shows two known aboriginal archaeological sites near Lake Bolac where stone arrangements, animal bones, stone tools and charcoal have been found. The cultural heritage sensitivity maps for Victoria are also publically available online.



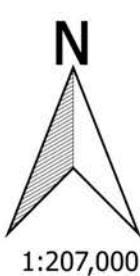
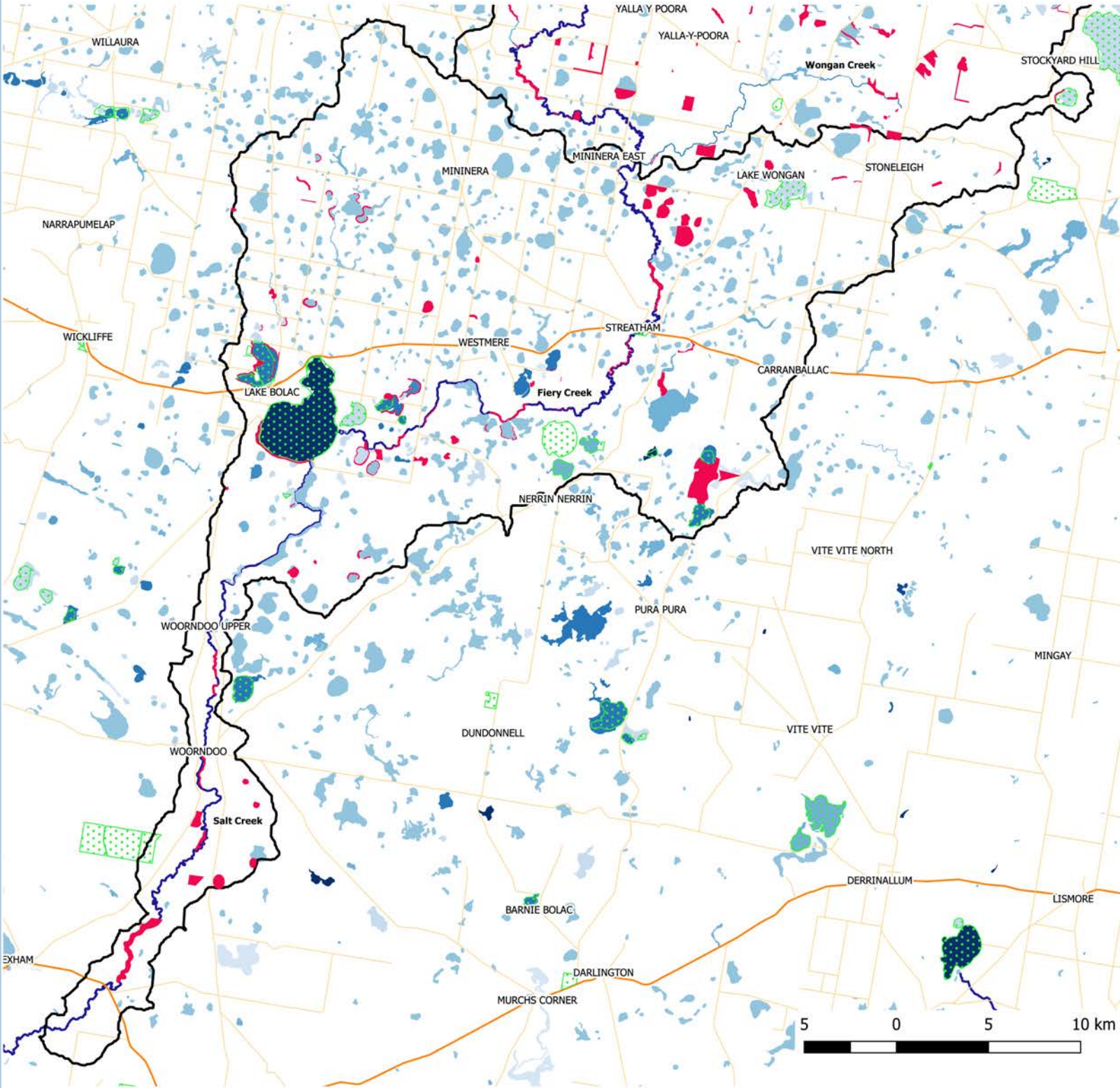


This map shows areas of cultural heritage sensitivity. These areas are either known to contain, or are likely to contain Aboriginal cultural heritage places and objects and are defined in the Aboriginal Heritage Regulations 2007. Cultural Heritage Sensitivity mainly occurs along waterways and around wetlands, as these areas are where it is most likely to find evidence of aboriginal existence. This map also shows two known aboriginal archaeological sites near Lake Bolac where stone arrangements, animal bones, stone tools and charcoal have been found. The cultural heritage sensitivity maps for Victoria are also publically available online.





This map shows all funded projects which have been completed within the catchment. The majority of these projects have been implemented by Beyond Bolac CAG; however, some have been implemented by Glenelg Hopkins CMA. Knowing where projects have been undertaken will assist Beyond Bolac CAG plan future projects across the catchment.



Project Achievements H11

- Completed Projects
- Beyond Bolac CAG Area
- Park or Reserve
- Road
  - HIGHWAY
  - ROAD
- Wetland
  - Permanent freshwater lake
  - Permanent freshwater mar
  - Permanent freshwater swamp
  - Permanent saline lake
  - Permanent saline marsh
  - Permanent saline swamp
  - Temporary freshwater lake
  - Temporary freshwater mar
  - Temporary freshwater swamp
  - Temporary saline lake
  - Temporary saline marsh
  - Temporary saline swamp
- Watercourse
  - CHALLICUM CREEK
  - FIERY CREEK
  - SALT CREEK
  - WONGAN CREEK



This map shows all funded projects which have been completed within the catchment. The majority of these projects have been implemented by Beyond Bolac CAG; however, some have been implemented by Glenelg Hopkins CMA. Knowing where projects have been undertaken will assist Beyond Bolac CAG plan future projects across the catchment.

